



THE ORCHID

a novel

*The Secret Code
of Modern Goddesses*

Audiobook PDF

Rocio Aquino



Angel Orengo

Authors' Message



Rocio Aquino & Angel Orengo

Welcome.

As you immerse yourself in the resonance of the audio version of *The Orchid: The Secret Code of Modern Goddesses* we invite you to further enrich your experience with the companion PDF designed to be the visual counterpart to the world you're about to navigate with your ears and heart.

This Guide includes:

This carefully crafted PDF includes essential elements found in the printed version of the book, such as:

- A detailed map of this fictional sanctuary, known as The Orchid, allowing you to traverse its enchanting grounds alongside our characters.
- A list of the Healers and Teachers, who along The Orchid's founder, Mary, are the wise custodians of wisdom who will lead our characters—and you—towards light and liberation.
- The Guest Information Chart, providing brief insights into the journeys and backgrounds of the souls seeking solace within The Orchid.
- The Spectrum of Inner Growth chart, guiding you through the layered process of personal evolution portrayed in our story.
- Illustrations of the unique Tarot cards utilized by a healer at The Orchid, as she provided one of our main characters, Sofia, profound insights to help her clarify her life's journey.

Thank you once again for your purchase, and most importantly, for joining our characters on this intimate journey. May the steps you take with them resonate deeply within your own path to awakening your power within.

We hope you enjoy the journey.

With love and light,

Rocio and Angel

THE ORCHID

Property Map



Legend: 1) Main Gate/Parking 2) Love and Ancestral Acknowledgement Stone 3) Pond 4) Reception/Guest Services 5) Central Plaza/Fire Pit 6) Main Offices 7) Activity Center 8) Sanctuary 9) Dining Hall 10) Fountain 11) Aquatic Center 12) Tree House Village #1 14) Dance Studio 15) Meditation Center 16) Observatory 17) Bamboo Forrest 18) Vegeta/Wble Garden 19) Plantations/Orchards 20) Ceremonial Arch 21) Heaven Spa 22) Labyrinth 23) Cliff Rooms 24) Nest Room 25) Mirror Room 26) Cave Room 27) Tree House Village #2

THE ORCHID

Teachers & Healers





The Guests

Name	Sofia Aguilar	Olivia Munson	Nicole Moretti	Stephanie Henry	Jennifer Clairborne
Age	28	50	30	35	37
Title / Occupation	Business Owner	Dir. Economic Development	Science Teacher Volunteer EMT	Designer	Finance Manager
Related Industry	Real Estate	Non-Profit	Education	Fashion Design	Insurance
Parents	Ana Aguilar Raul Aguilar	Loretta Munson Tyrone Munson	Isabel Moretti Gregorio Moretti	Mei Wong Fang Wong	Patricia Clairborne Paul Clairborne
Children	None	None	None	2	2
Marital Status	Single	Single	Single	Married	Single
Education	B. S. Business Admin.	Ph. D. in Political Science	M. A. Physics and Biology		B. S. Business Management
Place of Birth	Monterrey, Mexico	New Orleans, Louisiana	Houston, Texas	Singapore	Lansing, Michigan
City of Residence	Mexico City	Washington D.C.	Houston, Texas	New York City	Lansing, Michigan
Areas of Opportunity	Anger, resentment, aggressive behavior, lack of trust in others, hyper vigilance, interpersonal conflicts.	Panic attacks, migraines, insomnia, overbearing behavior, emotional guardedness, anxiety, stress, burnout, strained relationships, and difficulty relinquishing control.	Struggles with self-acceptance. Grappling with feelings of shame and guilt, due to parental pressures and personal beliefs regarding gender. Lack of self-confidence, fear of losing familial support.	Body image issues, extreme weight loss, unhealthy relationship with food, struggles with intimacy, fear of vulnerability, anxiety, low self-esteem, and post-traumatic stress.	Struggles with letting go of past relationships, unresolved emotions, attachment, lingering feelings of loss, lack of self-love, struggle with self-esteem, feelings of unworthiness, depression, sadness, and a general sense of despair.
Recommended by	Monica Reyes	Penelope Schriever	Malena Rodriguez	Natasha Pawlowska	Rebecca Smith
Assigned Room	The Cliff 1	The Canopy Room	The Cave	The Mirror	The Nest



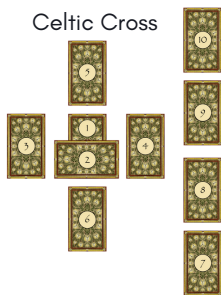
The Spectrum of Inner Growth

STAGE	FOCUS	LEVEL	EMOTION	BEHAVIOR
Being	Deep understanding and connection with themselves and the world.	Love	Selflessness, compassion, harmony, joy, serenity, ecstasy, peace, wholeness, fulfillment, love.	Inherent kindness, empathy, and a nonjudgmental attitude to self, others and the world.
Becoming	Begin to intentionally shape their own development and use their understanding and learning to transform themselves.	Transformation	Renewal, excitement, anticipation, hope, confidence.	Undertaking major changes in their lives (career, significant relationships).
		Intention	Determination, ambition, focus, courage, optimism, resilience.	Focused and proactive approach to life, actions align with their stated values and goals.
Learning	Begin to understand the power of positive emotions and attitudes (gratitude, forgiveness and acceptance), and how they influence their experiences and relationships.	Acceptance	Understanding, tolerance, patience, calmness, comfort.	Less complaints and resistance dealing with situations; greater ease and peace of mind.
		Forgiveness	Release, relief, sadness, vulnerability, compassion, empathy, peace.	Less anger or bitterness; more peaceful, serene demeanor.
		Gratitude	Appreciation, acknowledgment, contentment, serenity, joy.	Positiveness and appreciative attitude, even in the face of challenges.
Exploring	Exploring environment and their own consciousness. Start to ask questions and seek answers.	Awareness	Self-consciousness, frustration, realization, understanding, introspection, courage.	Interest in feedback and self-development (books, workshops).
		Curiosity	Confusion, uncertainty, anger, lack of clarity, anticipation, wonder, anxiety, excitement.	Inquisitiveness; potential periods of confusion or uncertainty.
Surviving	Meeting essential needs (food, water, shelter, safety, sustenance).	Unconsciousness	Fear, anxiety, apathy, shame, anger, confusion, restlessness, detachment, isolation, loneliness.	Self-absorption; lack of real interest, motivation, or heartfelt engagement.

Tarot Reading

These are the eleven cards Magda used in Sofia's reading. Ten of those cards were first arranged in a Celtic Cross formation, and the eleventh card, the High Priestess, was an additional card pulled to further clarify an external influence in Sofia's life.

Celtic Cross

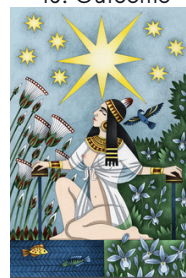


5. Possible Outcomes



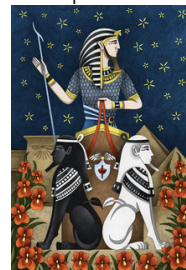
III

10. Outcome



XVII THE STAR XVII

9. Hopes & Fears



VII THE CHARIOT VII

3. Basis



XIII DEATH XIII

1. General Situation



QUEEN OF SWORDS

4. Recent Past



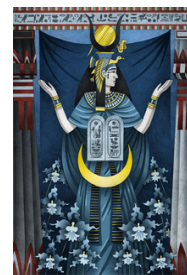
IX

8. Environment



III

8a. Additional Card



II THE HIGH PRIESTESS II

2. Opposing Influence



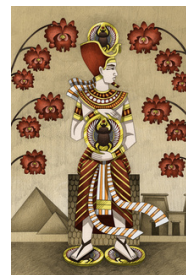
KNIGHT OF CUPS

6. Near future



IV

7. Self



IV